



GOOD MORNING
Have Good Trading Day

FRIDAY



Price is what you pay.
Value is what you get.

- Warren Buffet



MARKET PLUSE

INDIAN INDICES

NAME	CMP	NET CH.	%
SENSEX	26813	-23	-0.09
NIFTY	8130	-4	-0.05

INDIAN ADR'S

SYMBOL	CLOSE	GAIN/ LOSS %
DRREDDY	53.95	-0.09
HDFCBANK	56.99	-0.35
ICICIBK	9.62	-0.21
INFY	31.65	-1.40
TATAMOTOR	36.09	-1.90
WIPRO	12.03	+1.09

FII AND MF ACTIVITY

SYMBOL	In Crs.
FIIs Eq (Provisional)	511.90
FIIs Index Future	-0.29
FIIs Index Options	1571.63
FIIs Stock Future	196.93
FIIs Stock Options	-0.21
DII's Eq (Provisional)	772.04

CURRENCY

RBI RATE	04-JUN-2015
RUPEE - \$	64.1775
EURO	72.2510
YEN 10	51.6000
GBP	98.3007

MARKET PLUSE

GLOBAL INDICES

NAME	CMP	NET CH.	%
DOW	17905	-170	-0.94
NASDAQ	5059	-40	-0.79
NIKKEI	20398	-89	-0.44
HANG SENG	27461	-90	-0.33
SGX NIFTY	8103	-42	-0.52

WORLD COMMODITIES

FUTURE	US\$	CHANGES
CRUDE	58.00	Unch
NATURAL GAS	2.630	+0.004
GOLD	1177.2	+2.0
SILVER	16.135	+0.032
COPPER	2.6810	-0.0060

WORLD EVENTS

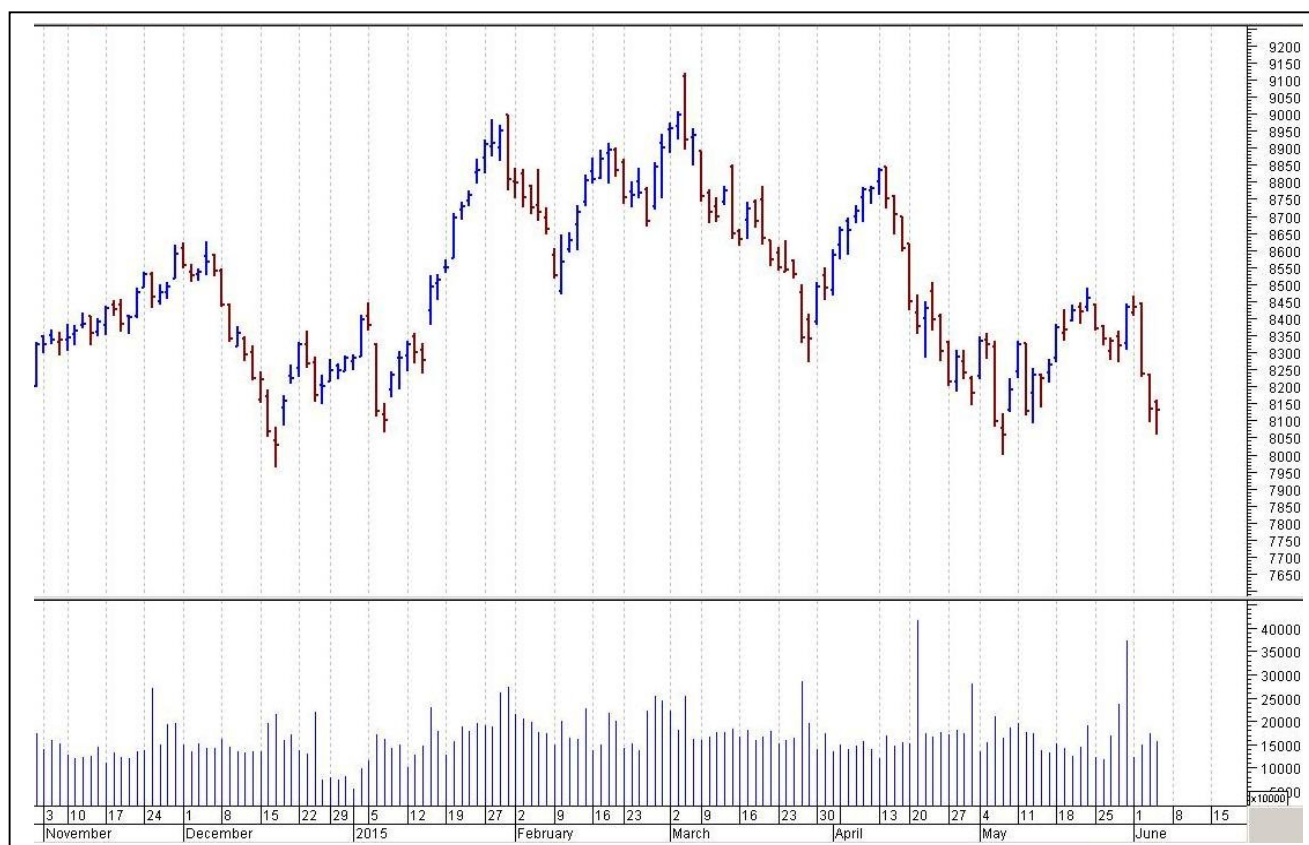
- US: Non-Farm Employment Change
- Unemployment Rate
- UK: Consumer Inflation Expectations

TOP STORY

- Kotak Mahindra Bank Bank's plans to launch general insurance may be delayed. Govt deliberates on implications of its directive on foreign ownership of insurers: ET
- NMDC April-May Iron Ore Production At 4.14 mt Vs 4.94 mt (YoY). April-May Iron Ore Sales At 4.54 mt Vs 5.74 mt (YoY)
- Bajaj Finance Approves Raising Up To `1,400 Cr Via QIP Issue. Sets QIP Floor Price At `4,407.34/Sh
- Central Bank of India board approves raising Tier 1 Capital upto `5000 Cr
- Cera Sanitaryware board to meet to consider entering a JV for sanitaryware and/or Tiles Mfg
- Just Dial shelves fundraising plans but plans share buyback: ET
- Idea Cellular hikes mobile data rates by up to 100% in NCR
- ONGC: OVL pulls out of Brazil block: BS
- JSPL's Africa arm to build \$400mn power plant in Mozambique: FE



NIFTY CHART



MARKET COMMENTARY

Indian equity closed with flattish note in Thursday's trade. The sentiments were on pessimistic note after a RBI sponsored survey stated that the economy is expected to grow at a rate of 7.8% in the current fiscal, a shade lower than earlier forecast of 7.9%. Investors also turned cautious on report that FDI in India declined by sharp 40% year-on-year to \$2.11 billion in March 2015, compared to \$3.53 billion in March 2014. Traders were seen piling position in Oil & Gas, Realty and Capital Goods stocks while selling was witnessed in Metal, Auto and Consumer Durables sectors stocks. For today's trade Nifty likely to trade in the range between 8150 – 8170 in the upper side and 8110 – 8080 in the lower side.

MARKET LEVELS

	CMP	SUPPORT LEVELS				RESISTANCE LEVELS			
NIFTY	8130	8110	8080	8050	8010	8150	8170	8190	8230
USDINR	64.28	64.22	64.11	64.05	63.91	64.35	64.42	64.47	64.59



FUTURES CORNER

SCRIPS	CLOSE	SUPPORT	TARGET		REMARKS
		STOP LOSS	T1	T2	
HDFC	1223.25	1211	1235	1245	TRADING CALL
LT	1666.9	1651	1685	1695	TRADING CALL
COLPAL	1934.5	1921	1955	1965	TRADING CALL

EQUITY CORNER

SCRIPS	CLOSE	SUPPORT	TARGET		REMARKS
		STOP LOSS	T1	T2	
KWALITY	50.25	49	52.5	54	TRADING CALL
BEML	1135.95	1127	1165	1185	TRADING CALL

DELIVERY BASED CALL / INVESTMENT CALL

SCRIPS	CMP	SUPPORT	TARGET		REMARK
		STOP LOSS	T1	T2	

BULK DEALS (BSE)

SCRIP	CLIENT NAME	BUY/SELL	QUANTITY	PRICE
EICHERMOT	AKTIEBOLAGET VOLVO	S	1,005,610	17,214.34
EICHERMOT	CITIGROUP GLOBAL MARKETS MAURITIUS PRIVATE LIMITED	B	264,818	17,190
MARG	ICICI BANK LIMITED	S	325,423	10.2

BULK DEALS (NSE)

SCRIP	CLIENT NAME	BUY/SELL	QUANTITY	PRICE
NIL				

SCRIP'S IN F&O BAN

(To resume for normal trading below 80% of market wide limit required)

AMTEKAUTO, UNITECH



NIFTY 50 STOCKS: SUPPORT & RESISTANCE						
Symbol	Close	Support 1	Support 2	Pivot Point	Resistance1	Resistance2
ACC	1466.90	1443.73	1420.57	1459.27	1482.43	1497.97
AMBUJACEM	229.00	223.47	217.93	226.63	232.17	235.33
ASIANPAINT	759.60	752.27	744.93	759.13	766.47	773.33
AXISBANK	556.40	548.27	540.13	554.13	562.27	568.13
BAJAJ-AUTO	2218.00	2185.37	2152.73	2223.18	2255.82	2293.63
BANKBARODA	161.70	158.98	156.27	161.57	164.28	166.87
BHARTIARTL	416.40	412.13	407.87	418.27	422.53	428.67
BHEL	248.00	243.50	239.00	246.60	251.10	254.20
BPCL	866.70	847.02	827.33	858.18	877.87	889.03
CAIRN	185.80	183.07	180.33	186.03	188.77	191.73
CIPLA	630.45	622.53	614.62	633.22	641.13	651.82
COALINDIA	388.55	384.23	379.92	387.57	391.88	395.22
DLF	111.15	107.88	104.62	110.22	113.48	115.82
DRREDDY	3422.00	3390.77	3359.53	3430.23	3461.47	3500.93
GAIL	374.15	367.75	361.35	375.60	382.00	389.85
GRASIM	3448.90	3409.47	3370.03	3434.48	3473.92	3498.93
HCLTECH	940.65	933.70	926.75	941.25	948.20	955.75
HDFC	1216.00	1195.67	1175.33	1210.33	1230.67	1245.33
HDFCBANK	1014.95	1000.68	986.42	1009.27	1023.53	1032.12
HEROMOTOCO	2547.90	2525.60	2503.30	2558.30	2580.60	2613.30
HINDALCO	121.30	119.02	116.73	121.28	123.57	125.83
HINDUNILVR	822.65	816.80	810.95	825.90	831.75	840.85
ICICIBANK	290.10	286.10	282.10	289.45	293.45	296.80
IDFC	149.25	146.65	144.05	148.65	151.25	153.25
INFY	2028.05	2008.77	1989.48	2031.88	2051.17	2074.28
ITC	301.60	297.65	293.70	302.15	306.10	310.60
JINDALSTEL	106.20	103.70	101.20	105.75	108.25	110.30
JPASSOCIAT	13.10	12.47	11.83	13.23	13.87	14.63
KOTAKBANK	1365.00	1346.67	1328.33	1358.33	1376.67	1388.33
LT	1662.45	1645.33	1628.22	1662.67	1679.78	1697.12
LUPIN	1749.70	1713.88	1678.07	1763.82	1799.63	1849.57
M&M	1195.60	1177.85	1160.10	1197.80	1215.55	1235.50
MARUTI	3772.05	3741.70	3711.35	3777.35	3807.70	3843.35
NTPC	136.90	135.57	134.23	137.48	138.82	140.73
ONGC	301.35	297.80	294.25	303.80	307.35	313.35
PNB	144.85	141.43	138.02	146.47	149.88	154.92
POWERGRID	144.35	142.78	141.22	143.97	145.53	146.72
RANBAXY	859.80	822.93	786.07	846.32	883.18	906.57
RELIANCE	912.70	898.10	883.50	907.15	921.75	930.80
RELINFRA	370.75	362.53	354.32	369.27	377.48	384.22
SBIN	257.60	253.77	249.93	257.58	261.42	265.23
VEDL	184.20	179.00	173.80	185.40	190.60	197.00
SIEMENS	1343.90	1315.97	1288.03	1338.98	1366.92	1389.93
SUNPHARMA	831.55	819.27	806.98	830.88	843.17	854.78
TATAMOTORS	451.20	444.95	438.70	451.70	457.95	464.70
TATAPOWER	70.15	68.70	67.25	69.80	71.25	72.35
TATASTEEL	308.05	302.15	296.25	310.45	316.35	324.65
TCS	2605.65	2588.50	2571.35	2605.65	2622.80	2639.95
ULTRACEMCO	2868.05	2828.25	2788.45	2854.00	2893.80	2919.55
WIPRO	552.70	546.17	539.63	553.53	560.07	567.43



CORPORATE ACTION / BOARD MEETINGS

NSE Download Ref.No.:NSE/CML/29845:- Suspension of trading in Securities of Company NRC Limited for Non-Compliance of certain clauses of the Listing Agreement wef June 09, 2015

NSE Download Ref.No.:NSE/CML/29862:- Face Value Split - Fineotex Chemical Limited(FCL) from Rs. 10 to Rs. 2 wef June 11, 2015

BOARD MEETINGS

COMPANY NAME	DATE	PURPOSE	RS. PER SH.
TIIL	5-Jun-15	Dividend	5
TCS	5-Jun-15	Annual General Meeting /Dividend	24
MANINFRA	5-Jun-15	Dividend	0.54
JMFINANCIL	8-Jun-15	Dividend	0.8
AUROPHARMA	8-Jun-15	Dividend	1
IMPAL	9-Jun-15	Dividend	10
SUNDRMFAST	9-Jun-15	Dividend	0.9
POLARIS	10-Jun-15	Annual General Meeting /Dividend	10
ORIENTBANK	10-Jun-15	Annual General Meeting /Dividend	3.3
TORNTPOWER	11-Jun-15	Dividend	1.5
FCL	11-Jun-15	Face Valus Split From Rs 10 To Rs 2	
MINDTREE	11-Jun-15	Annual General Meeting /Dividend	10
VIDEOIND	11-Jun-15	Annual General Meeting /Dividend	2
RALLIS	12-Jun-15	Annual General Meeting /Dividend	1.5
VIJAYABANK	12-Jun-15	Annual General Meeting /Dividend	1.5
INFY	15-Jun-15	Annual General Meeting /Dividend	29.5
TORNTPHARM	15-Jun-15	Dividend	6.25
BANKBARODA	16-Jun-15	Annual General Meeting /Dividend	3.2
GRUH	16-Jun-15	Annual General Meeting /Dividend	2
ASHOKLEY	17-Jun-15	Annual General Meeting /Dividend	0.45
VISHNU	18-Jun-15	Dividend	1
ALBK	18-Jun-15	Annual General Meeting /Dividend	1.63

NEWS & RUMOURS:

- Gold (Spot Dollar) major support = \$1155/\$1128 & Resistance = \$1209/\$1248.
- Crude oil range->\$53 to \$63.
- U.S. Equities Fall amid Greece Talks as Commodity Shares Slide: - U.S. stocks declined as another round of Greek debt talks failed to yield a breakthrough and a slide in oil and metals weighed on commodities producers. The International Monetary Fund [said](#) the Fed should hold off from raising interest rates until the first half of 2016, as it cut its U.S. growth forecast for the second time in three months.
- Gold plunges to a monthly-low, as Greece nears deal with creditors:- [Gold futures](#) fell sharply on Thursday plunging nearly 1%, as Greece reportedly neared an agreement with its creditors following months of stalled negotiations, while the International Monetary Fund offered suggestions that the Federal Reserve should delay a much-anticipated interest rate hike until 2016.
- Crude oil prices fall to 1-week low ahead of OPEC meeting: - Oil prices fell to a one-week low on Thursday, as traders looked ahead to the outcome of a key meeting of the Organization of the Petroleum Exporting Countries in Vienna on Friday.
- Natural gas futures plunge to 5-week low after bearish storage data: - Natural gas futures plunged sharply to hit a five-week low on Thursday, after data showed that U.S. natural gas supplies rose more than expected last week.

TRENDS & OUTLOOK – DATE: 05- June- 2015

PRECIOUS METALS:

COMMDITY (MCX)	S2	S1	PIVOT POINT	R1	R2
GOLD (Aug)	26420	26600	26970	27210	27465
SILVER (July)	35001	36111	37500	38700	39600

BASE METALS

COMMDITY (MCX)	S2	S1	PIVOT POINT	R1	R2
COPPER (June)	372	377	384	390	395
ZINC (June)	132.60	135.30	137.55	139.75	142.70
LEAD (June)	118.60	121.30	124	126.30	128.55
NICKEL (June)	790	807	831	853	869

ENERGY

COMMDITY (MCX)	S2	S1	PIVOT POINT	R1	R2
CRUDE OIL (June)	3520	3636	3765	3838	3945
NATURAL GAS (June)	157	162	169	175	180

DATE TALKS : TODAY'S ECONOMIC DATA :

German Factory Orders, OPEC Meetings, Non-Farm Employment Change, Unemployment Rate, Average Hourly Earnings, FOMC Member Dudley Speaks.



Registered Office

Indira House, 3rd Floor, 5 Topiwala Lane,
Opp. Lemington Road Police Station, Grant Road (East), Mumbai - 400007.

Corporate Office

'Ramavat House' E-15, Saket Nagar, Indore - 452018 (M.P.)

Customer Care

Tel: +91-731-4097170/ 71/ 72/ 73/ 74 M. +91 93031 72345

Email: customercare@indiratrade.com www.indiratrade.com



INSTITUTIONAL DEALING UNIT

Africa House, 5, Topiwalla Lane, Lamington Road, Mumbai, 400007

Tel: +91 22 30080678 Fax : +91 22 23870767 Email : ie@indiratrade.com

Disclaimer

This report is for private circulation within the Indira Group. This report is strictly confidential and for information of the selected recipient only and may not be altered in any way, transmitted to, copied or distributed, in part or in whole, to any other person or to the media or reproduced in any form. This report should not be construed as an offer or solicitation to buy or sell any securities or any interest in securities. It does not constitute a personal recommendation or take into account the particular investment objectives, financial situations, or any such factor. The information, opinions estimates and forecasts contained here have been obtained from, or are based upon, sources we believe to be reliable, but no representation of warranty, express or implied, is made by us to their accuracy or completeness. Opinions expressed are our current opinions as of the date appearing on this material only and are subject to change without notice.